



B L A C K T O W N C I T Y C O U N C I L

BLACKTOWN FURNITURE & SHELTER CATALOGUE



CONTENTS

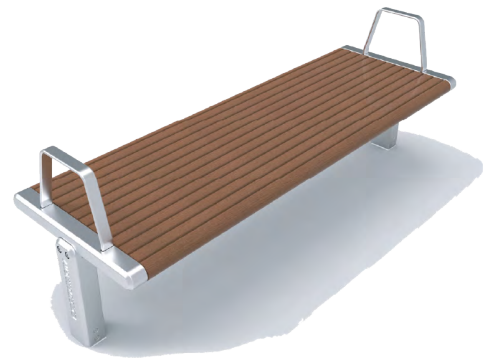
1.0 Introduction	03
2.0 Park Suite	04
2.1 Park Seat	05
2.2 Park Bench	07
2.3 Park Picnic Bench	09
2.4 Park Picnic Table	10
2.5 Bollard	13
2.6 Bike Rack	17
2.7 Park Picnic Shelter	21
3.0 Urban Suite	23
3.1 Urban Seat 1800	24
3.2 Urban Seat 720	26
3.3 Urban Bench	28
3.4 Urban Bollard	30
3.5 Urban Bike Rack	34
4.0 Bin	37
4.1 240LT Bin	38
5.0 Drinking Fountain	41

INTRODUCTION

The Blacktown City furniture suite has been developed by HUB Australasia in consultation with Blacktown City Council, to meet the needs of the growing public domain within the Blacktown local government area. The intention of the Blacktown City furniture is to better coordinate the delivery of furniture throughout the city - to have a streamlined look, better ability to manage and maintain our furniture, and to be able to specify furniture to public place developers.

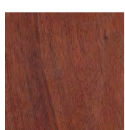
PARK SUITE

The Park Suite gives the parklands of the Blacktown local government area a robust and functional suite of furniture elements. The suite is a modern, robust and aesthetically pleasing design that meets the detailed brief set out by Blacktown City Council. The suite is offered in both 'Spotted Gum' hardwood and a sustainable alternative of 'Silver Gum' Modwood. The Park Suite will unify all outdoor furniture elements across the numerous and growing amount of recreational spaces in Blacktown local government area.

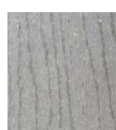


URBAN SUITE

This unique suite of street furnishings will be located on the streetscapes of the Blacktown local government area over the next 20/25 years. The Urban Suite combines a modern sleek design with functionality and unity between the seven different elements within the suite. The suite is offered in both 'Spotted Gum' hardwood and a sustainable alternative of 'Silver Gum' Modwood. The Blacktown Urban suite will uplift the streetscapes in which it inhabits breathing life into the streets of this ever-growing Blacktown local government area.



HARDWOOD SPOTTED GUM



MODWOOD SILVER GUM

2 . 0

PARK SUITE



PARK SEAT



MATERIALS

Linish Aluminium Sand castings
Select grade Hardwood - oil finish or Modwood slats
Stainless steel fasteners

DIMENSIONS:

L 1800mm W 600mm H 810mm

OPTIONS:

Armrests

FOOTING OPTIONS

Surface or sub-surface mounted

Surface Mount Foot - 9646-851

Fabricated Mount and Nut - 9646-813 / 9646-840

PARK SEAT GENERAL ASSEMBLY

GENERAL NOTES:

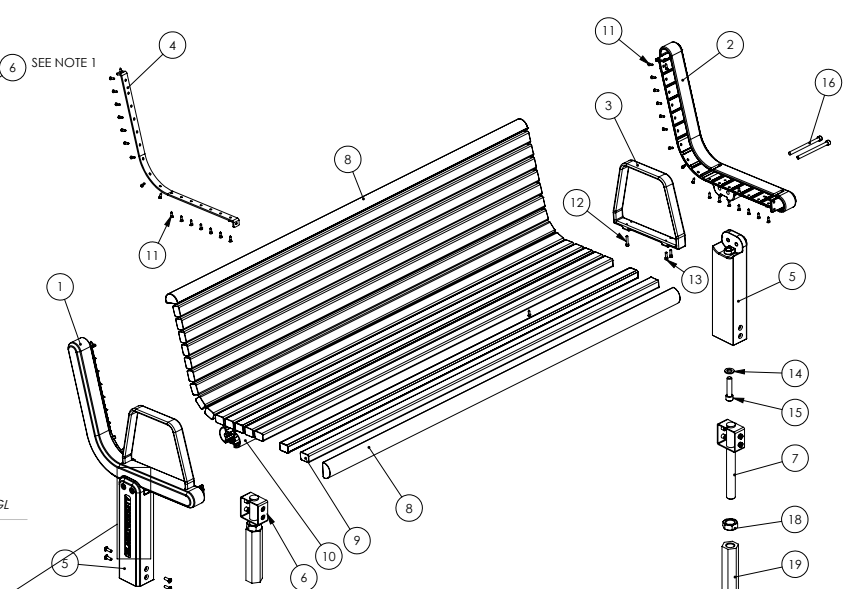
- All dimensions in millimetres unless otherwise shown.
- Tolerances
 - Linear dimension tolerances as specified on drawings.
 - General tolerances are as follows:
 - 0.5mm - 6mm ± 0.1, 6mm - 30mm ± 0.2,
 - 30mm - 120mm ± 0.3, 120mm - 400mm ± 0.5,
 - 400mm - 1000mm ± 0.8, 1000mm - 2000mm ± 1.2
 - Tolerances on all angular dimensions shall be as specified in drawings. General angular tolerances based on length of short side of angle are:
 - 50 - 100mm ± 1° 10'00" - 50mm ± 0° 30'
 - 50mm - 125mm ± 0° 20' 120mm - 400mm ± 0° 10'
 - Holes and radii ± 0.5mm unless specified otherwise.
 - No deviation from drawing will be accepted without prior written approval.
 - Do not scale from drawings. Use dimensions provided if this is insufficient or ambiguous contact HUB for clarification.

ITEM	TITLE	DRG No	MATERIAL	QTY
1	BENCH SEAT CAST END FRAME RHS	9646-821	ALUMINIUM - A356-T6	1
2	BENCH SEAT CAST END FRAME LHS	9646-822	ALUMINIUM - A356-T6	1
3	ARMREST	9646-815	ALUMINIUM - A356-T6	2
4	BENCH SEAT SLAT STRAP	9646-824	STAINLESS STEEL - 316	1
5	STANDARD LEG	9646-823	ALUMINIUM - A356-T6	2
6	LONG LEG - SEE NOTE 1.	9646-836	ALUMINIUM - A356-T6	AS REQ'D
7	FABRICATED FOOT	9646-813	Q245 STEEL	2
8	BULLNOSE SLAT	9646-819	HARDWOOD TIMBER	2
9	40 x 30 SLAT	9646-818	HARDWOOD TIMBER	16
10	CROSS BRACE	9646-816	ALUMINIUM - 6061-T6	1
11	12g x 1.0" SELF TAPPING TIMBER SCREW	-	STAINLESS STEEL - 316	58
12	M6 x 30 SHCS	-	STAINLESS STEEL - 316	2
13	M6 x 20 SHCS	-	STAINLESS STEEL - 316	4
14	M16 WASHER - NARROW	-	STAINLESS STEEL - 316	2
15	M16 x 70 SHCS	-	STAINLESS STEEL - 316	2
16	M10 x 140 SHCS	-	STAINLESS STEEL - 316	4
17	M8 x 20 COUNTERSUNK SECURITY SCREW	-	STAINLESS STEEL - 316	8+
18	M30 HEX NUT	-	Q245 STEEL	2
19	EMBEDDED MOUNT	9646-840	Q245 STEEL	2

GENERAL NOTES:

- FOR SLOPING SITES, STD LEG IS DOCKED TO SUIT SHORTER SIDE AND LONG LEG (ITEM 6) IS DOCKED TO SUIT SITE CONDITIONS.

REVISED TO INCLUDE LOGO	JC	3/10/2017	-	-	-	C
SKATE DETERRENT REMOVED	JC	28/09/2017	-	-	-	B
Initial Release	JC	17/07/2017	-	-	-	A
DESCRIPTION	DRAWN	DATE	CHECKED	DATE	CERTIFIED	DATE REVISION



SECTION C-C
SCALE 1 : 10
(ROTATED 90°)

SECTION A-A
SCALE 1 : 5
(ROTATED 90°)

SECTION B-B
SCALE 1 : 5
(ROTATED 90°)

DETAIL D
SCALE 1 : 5

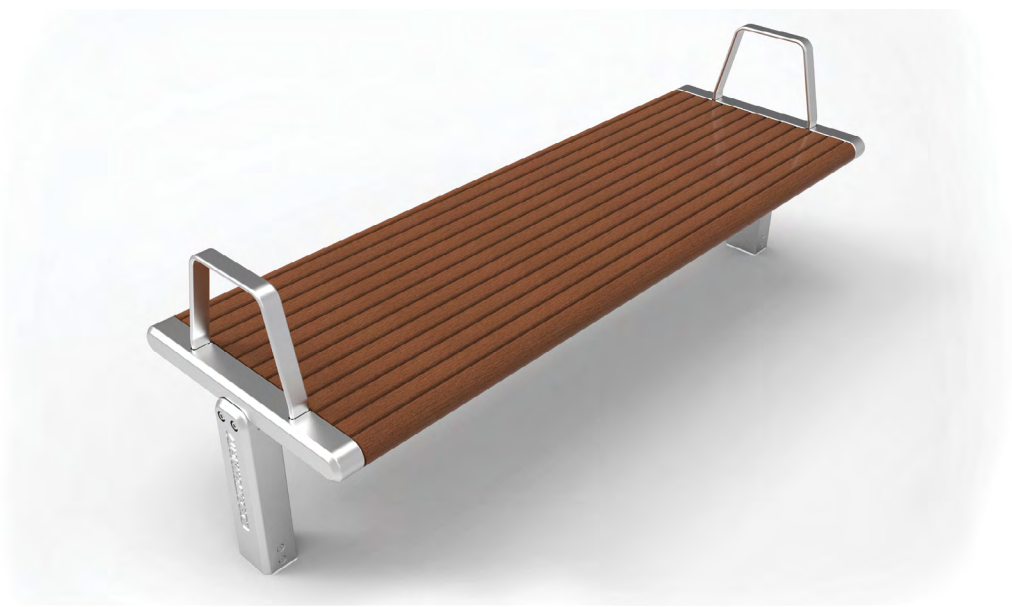
Part Location:
Part Name:

Weight:
kg

A3

Registered Design © HUB Innovations Pty Ltd 2017

PARK BENCH



MATERIALS

Linish Aluminium Sand castings
Select grade Hardwood - oil finish or Modwood slats
Stainless steel fasteners

DIMENSIONS:

L 1800mm W 594mm H 434mm

OPTIONS:

Armrests

FOOTING OPTIONS

Surface or sub-surface mounted

Surface Mount Foot - 9646-851

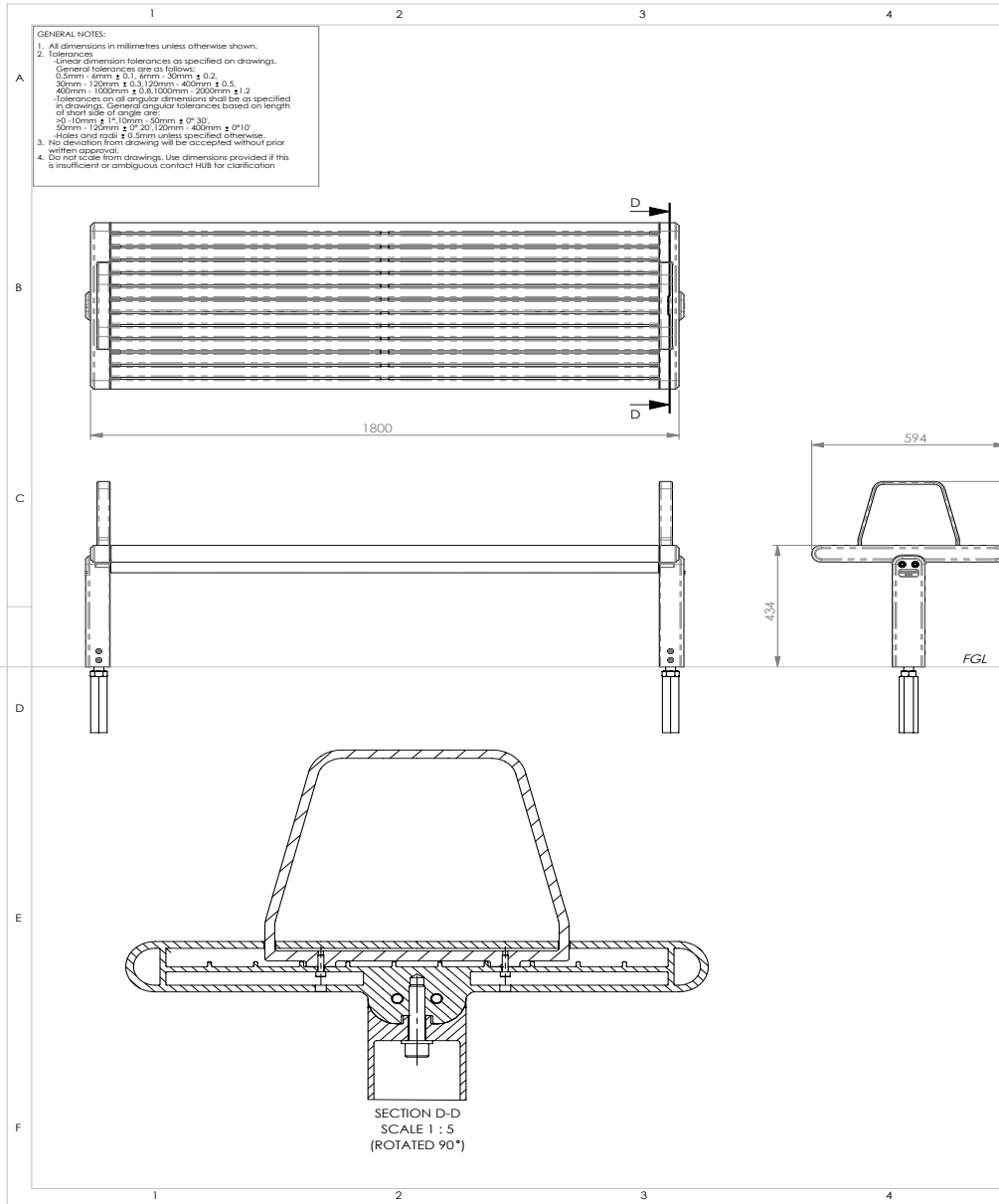
Fabricated Mount and Nut - 9646-813 / 9646-840

PARK BENCH GENERAL ASSEMBLY

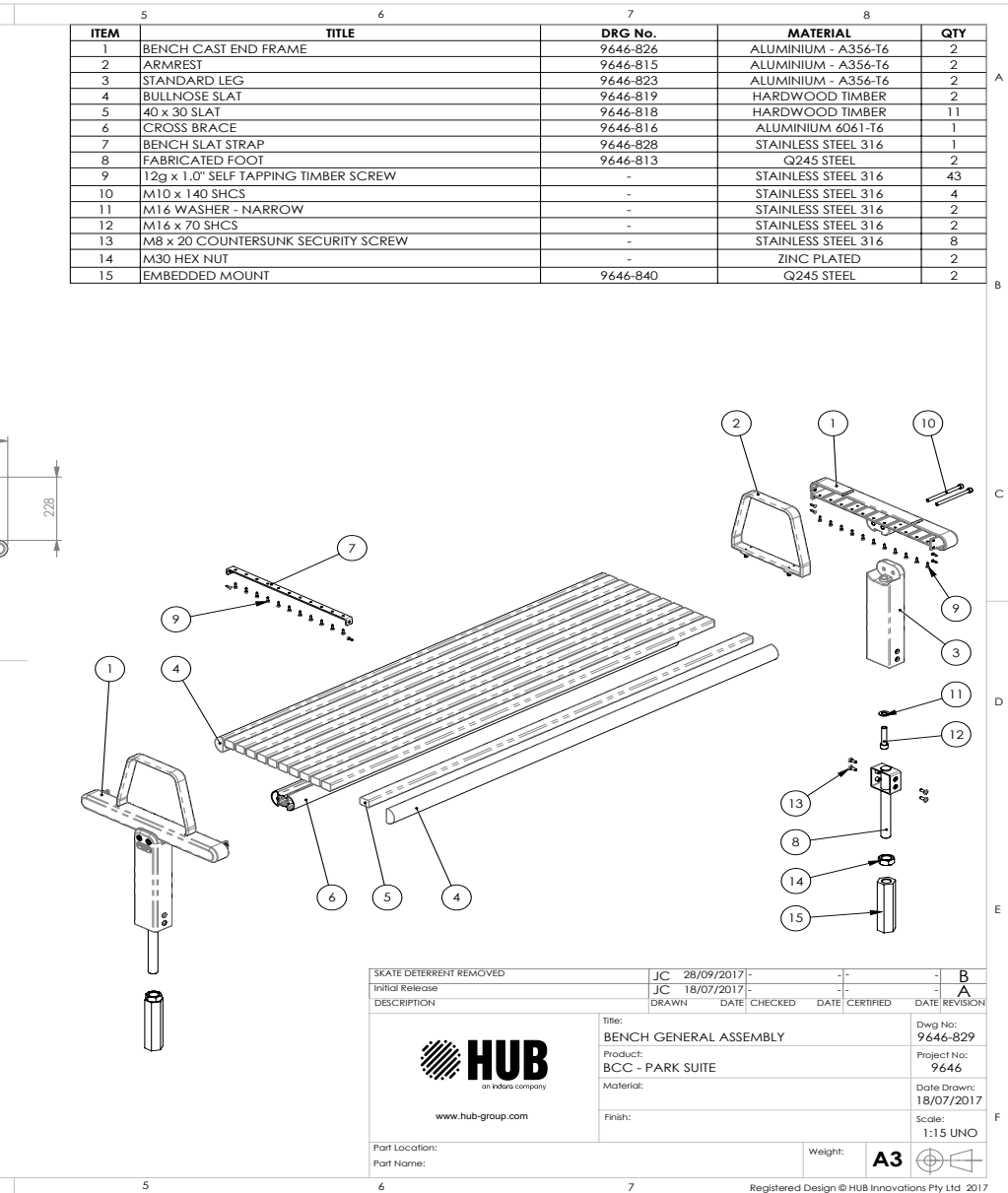
GENERAL NOTES:


- All dimensions in millimetres unless otherwise shown.
- Tolerances:
 - Linear dimension tolerances as specified on drawings.
 - General tolerances are as follows:
 - 0.5mm - 6mm ± 0.1, 6mm - 30mm ± 0.2,
 - 30mm - 120mm ± 0.3, 120mm - 400mm ± 0.4,
 - 400mm - 1000mm ± 0.6, 1000mm - 2000mm ± 1.2
 - Tolerances on all angular dimensions shall be as specified in drawings. General angular tolerances based on length of shortest side of angle are:
 - 30 - 10mm ± 1° 10mm - 50mm ± 0° 30'
 - 50mm - 100mm ± 0° 20' 100mm - 400mm ± 0° 10'
 - Holes and radii ± 0.5mm unless specified otherwise.
 - No deviation from drawings will be accepted without prior written approval.
 - Do not scale from drawings. Use dimensions provided if this is insufficient or ambiguous contact HUB for clarification.

ITEM	TITLE	DRG No.	MATERIAL	QTY
1	BENCH CAST END FRAME	9646-826	ALUMINIUM - A356-T6	2
2	ARMREST	9646-815	ALUMINIUM - A356-T6	2
3	STANDARD LEG	9646-823	ALUMINIUM - A356-T6	2
4	BULLNOSE SLAT	9646-819	HARDWOOD TIMBER	2
5	40 x 30 SLAT	9646-818	HARDWOOD TIMBER	11
6	CROSS BRACE	9646-816	ALUMINIUM 6061-T6	1
7	BENCH SLAT STRAP	9646-828	STAINLESS STEEL 316	1
8	FABRICATED FOOT	9646-813	Q245 STEEL	2
9	12g x 1.0" SELF TAPPING TIMBER SCREW	-	STAINLESS STEEL 316	43
10	M10 x 140 SHCS	-	STAINLESS STEEL 316	4
11	M16 WASHER - NARROW	-	STAINLESS STEEL 316	2
12	M16 x 70 SHCS	-	STAINLESS STEEL 316	2
13	M8 x 20 COUNTERSUNK SECURITY SCREW	-	STAINLESS STEEL 316	8
14	M30 HEX NUT	-	ZINC PLATED	2
15	EMBEDDED MOUNT	9646-840	Q245 STEEL	2



SECTION D-D
SCALE 1 : 5
(ROTATED 90°)



SKATE DETERRENT REMOVED	JC	28/09/2017	-	-	-	B
Initial Release	JC	18/07/2017	-	-	-	A
DESCRIPTION	DRAWN	DATE	CHECKED	DATE	CERTIFIED	DATE REVISION
 www.hub-group.com	Title: BENCH GENERAL ASSEMBLY					Dwg No: 9646-829
	Product: BCC - PARK SUITE					Project No: 9646
	Material:					Date Drawn: 18/07/2017
	Finish:					Scale: 1:15 UNO
Part Location:						Weight:
Part Name:						A3

Registered Design © HUB Innovations Pty Ltd 2017

PARK PICNIC BENCH



MATERIALS

Linish Aluminium Sand castings
Select grade Hardwood - oil finish or Modwood slats
Stainless steel fasteners

DIMENSIONS:

Standard Bench: L 1800mm W 406mm H 434mm
Accessible Bench: L 930mm W 406mm H 433mm

OPTIONS:

Armrests

FOOTING OPTIONS

Surface or sub-surface mounted
Surface Mount Foot - 9646-851
Fabricated Mount and Nut - 9646-813 / 9646-840

PARK PICNIC TABLE



MATERIALS

Linish Aluminium Sand castings
Select grade Hardwood - oil finish or Modwood slats
Stainless steel fasteners

DIMENSIONS:

L 1800mm W 735mm H 790mm

OPTIONS:

Armrests

FOOTING OPTIONS

Surface or sub-surface mounted

Surface Mount Foot - 9646-851

Fabricated Mount and Nut - 9646-813 / 9646-840

PARK PICNIC BENCH GENERAL ASSEMBLY

ITEM LIST:

ITEM	TITLE	DRG No.	MATERIAL	QTY
1	PICNIC BENCH CAST END FRAME	9646-831	ALUMINIUM A356-T6	2
2	STANDARD LEG	9646-823	ALUMINIUM A356-T6	2
3	FABRICATED FOOT	9646-813	Q245 STEEL	2
4	PICNIC BENCH SLAT STRAP	9646-832	STAINLESS STEEL - 316	1
5	CROSS BRACE	9646-845	ALUMINIUM - 6061-T6	1
6	40 x 30 SHORT SLAT	9646-843	HARDWOOD TIMBER	7
7	SHORT BULLNOSE SLAT	9646-844	HARDWOOD TIMBER	2
8	12g x 10" SELF TAPPING TIMBER SCREW	-	STAINLESS STEEL - 316	31
9	M10 x 140 SHCS	-	STAINLESS STEEL - 316	4
10	M16 WASHER - NARROW	-	STAINLESS STEEL - 316	2
11	M16 x 70 SHCS	-	STAINLESS STEEL - 316	2
12	M8 x 20 COUNTERSUNK SECURITY SCREW	-	STAINLESS STEEL - 316	8

GENERAL NOTES:
1. REMOVE ALL BURRS AND SHARP EDGES

SECTION A-A SCALE 1 : 5

EXPLODED VIEW NTS

PICTORIAL VIEW NTS

SECTION A-A SCALE 1 : 5

GENERAL NOTES:
1. REMOVE ALL BURRS AND SHARP EDGES

REGISTRATION AND REVISIONS:

ITP DOC No.	PARENT ASSEMBLY	ORIGINAL ISSUE	JC	15/11/2018	JH		B
9646-841			JC	16/03/2018	JH	X	A

TOLERANCES UNLESS OTHERWISE SPECIFIED:

TYPE	TOLERANCE
LINEAR	±0.20mm
LINEAR	±0.50mm
ANGULAR	±0.5°

PROJECT INFORMATION:

MATERIAL	GRADE/SPEC	PROJECT TITLE	SCALE
SEE BOM	X	BCC FURNITURE SUITE	X

PROJECT No. 9646-842

REGISTERED DESIGN © HUB INNOVATIONS PTY LTD 2016

PARK BOLLARD



Picture showing removable bollard

MATERIALS

Anodised Aluminium
Stainless steel fasteners
Top Cap with Logo
Protective Strip

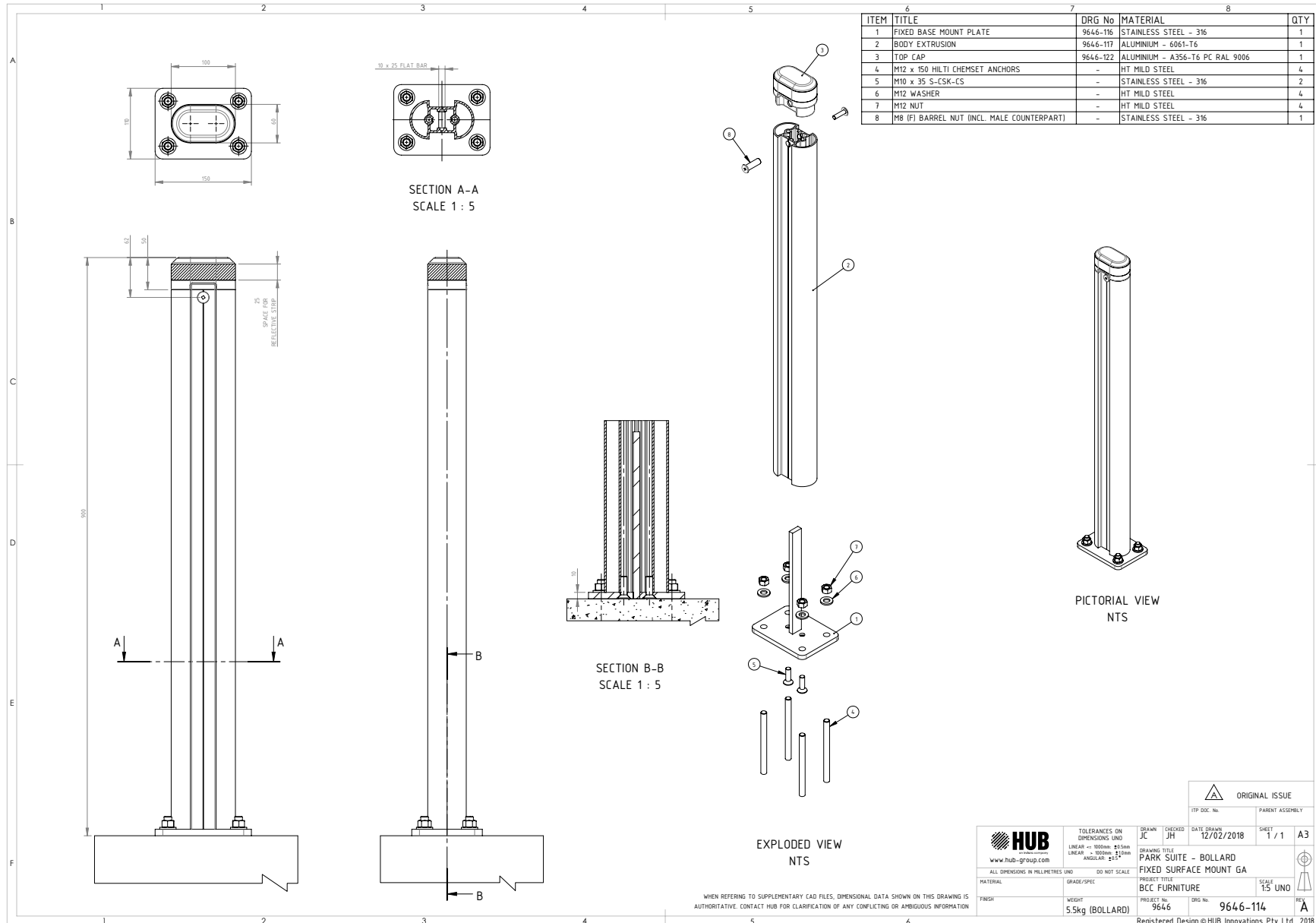
DIMENSIONS:

L 110mm W 60mm H 900mm

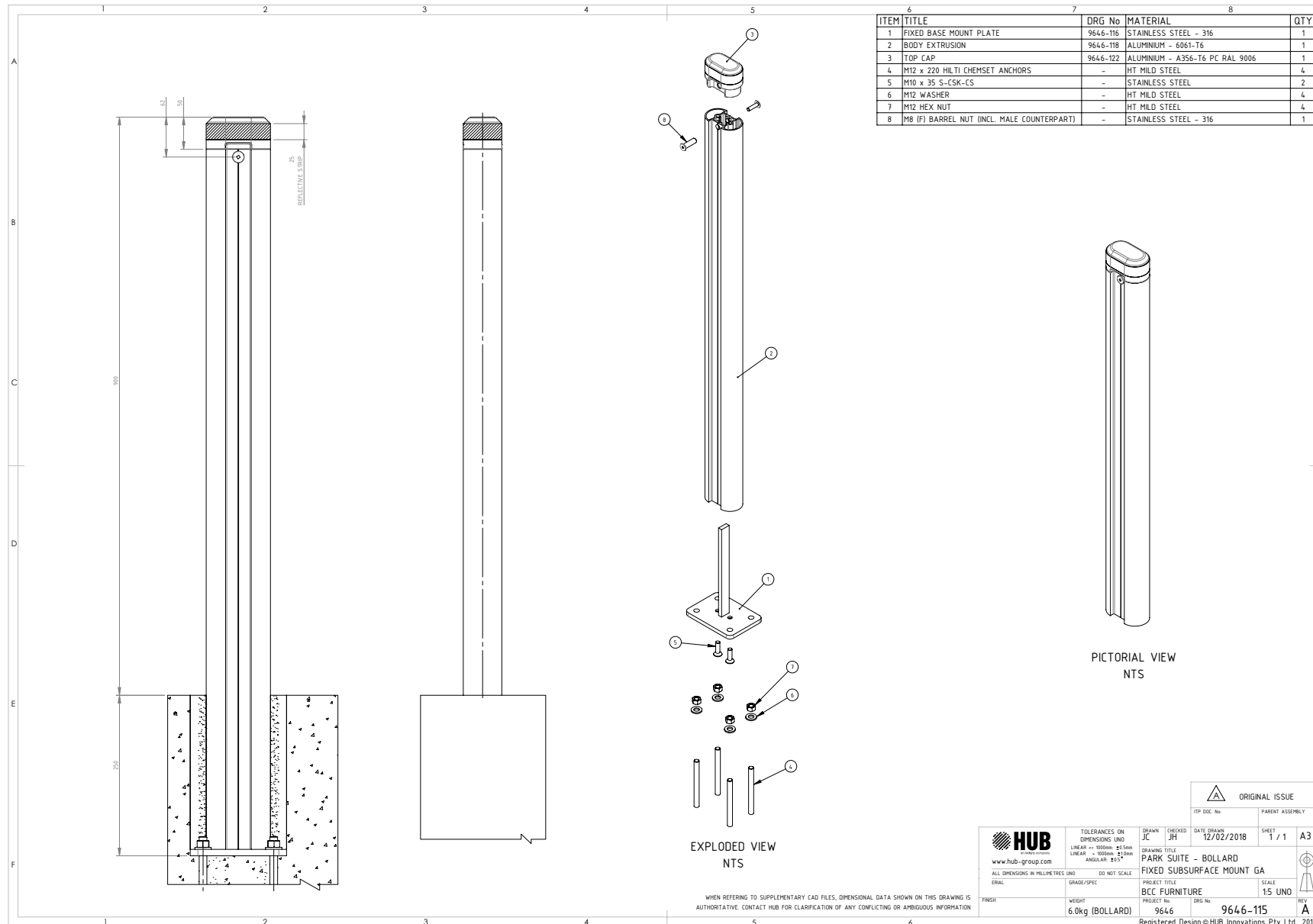
FOOTING OPTIONS

Surface or sub-surface mounted and removeable
Surface Mount Foot - 9646-851
Fabricated Mount and Nut - 9646-813 / 9646-840

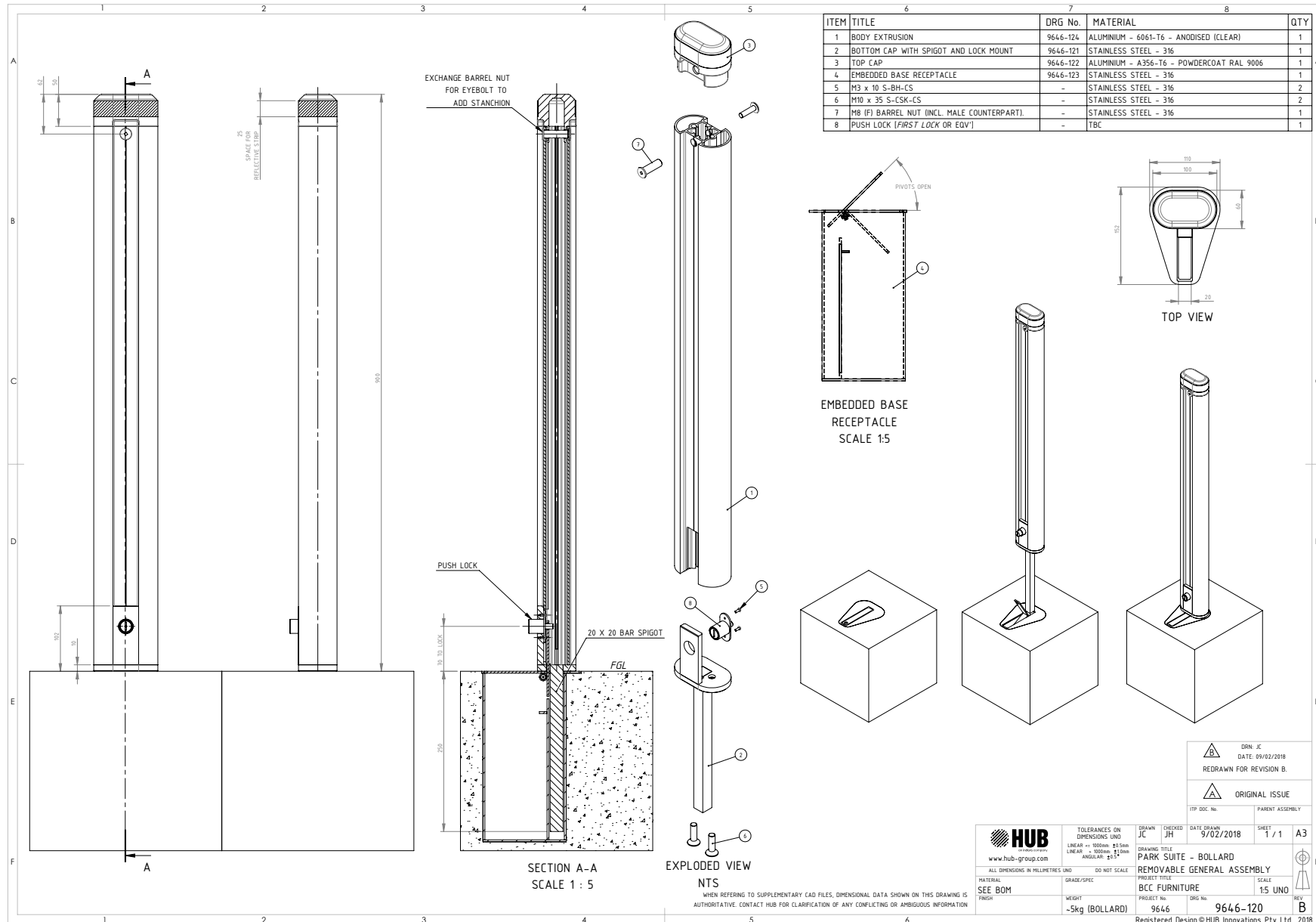
PARK BOLLARD FIXED GENERAL ASSEMBLY



PARK BOLLARD SUB-SURFACE GENERAL ASSEMBLY



PARK BOLLARD REMOVEABLE GENERAL ASSEMBLY



PARK BIKE RACK



Picture showing sub-surface mounted

MATERIALS

Linish Aluminium Sand castings
Stainless steel fasteners
Top Cap with logo

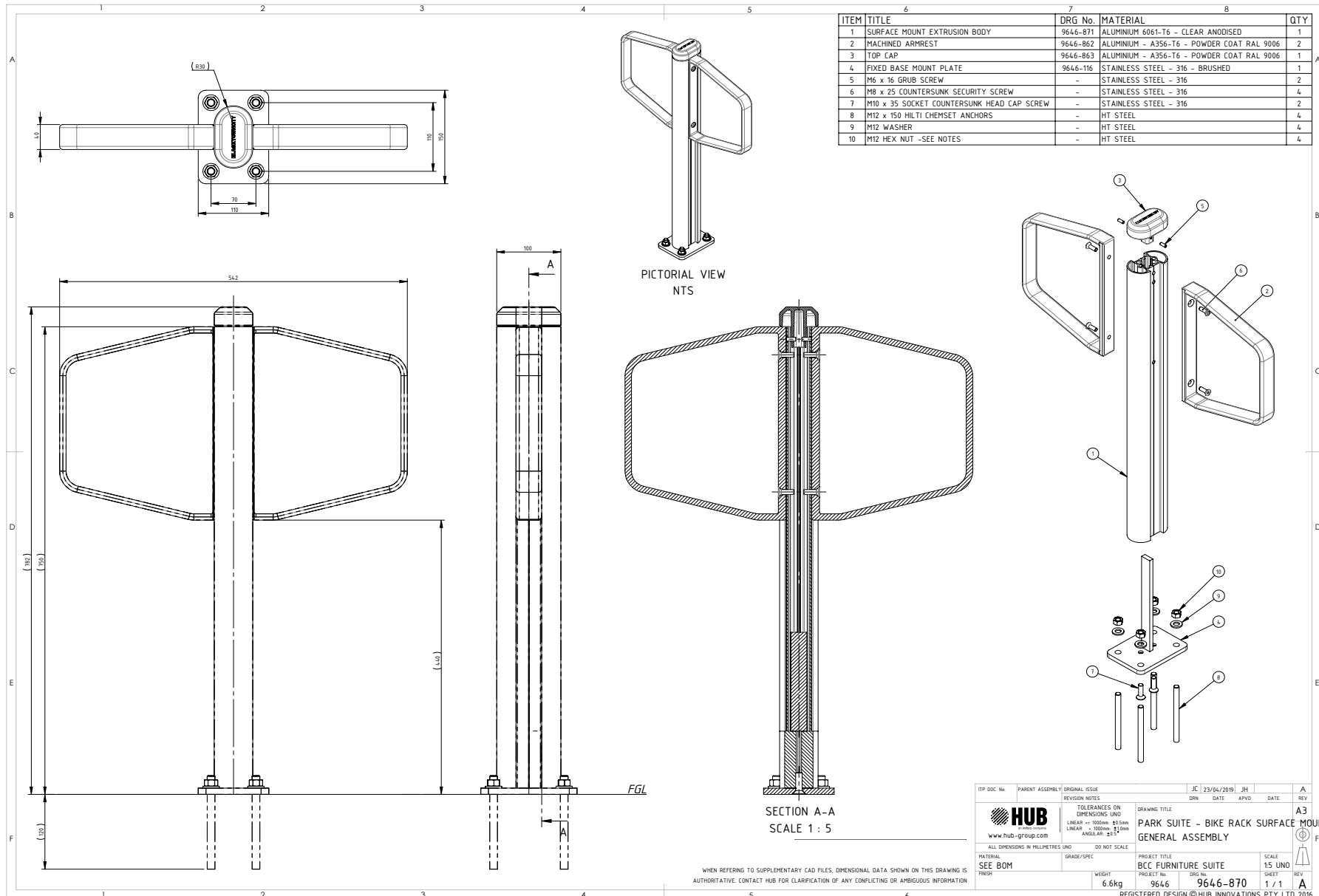
DIMENSIONS:

L 100mm W 542mm H 782mm

OPTIONS:

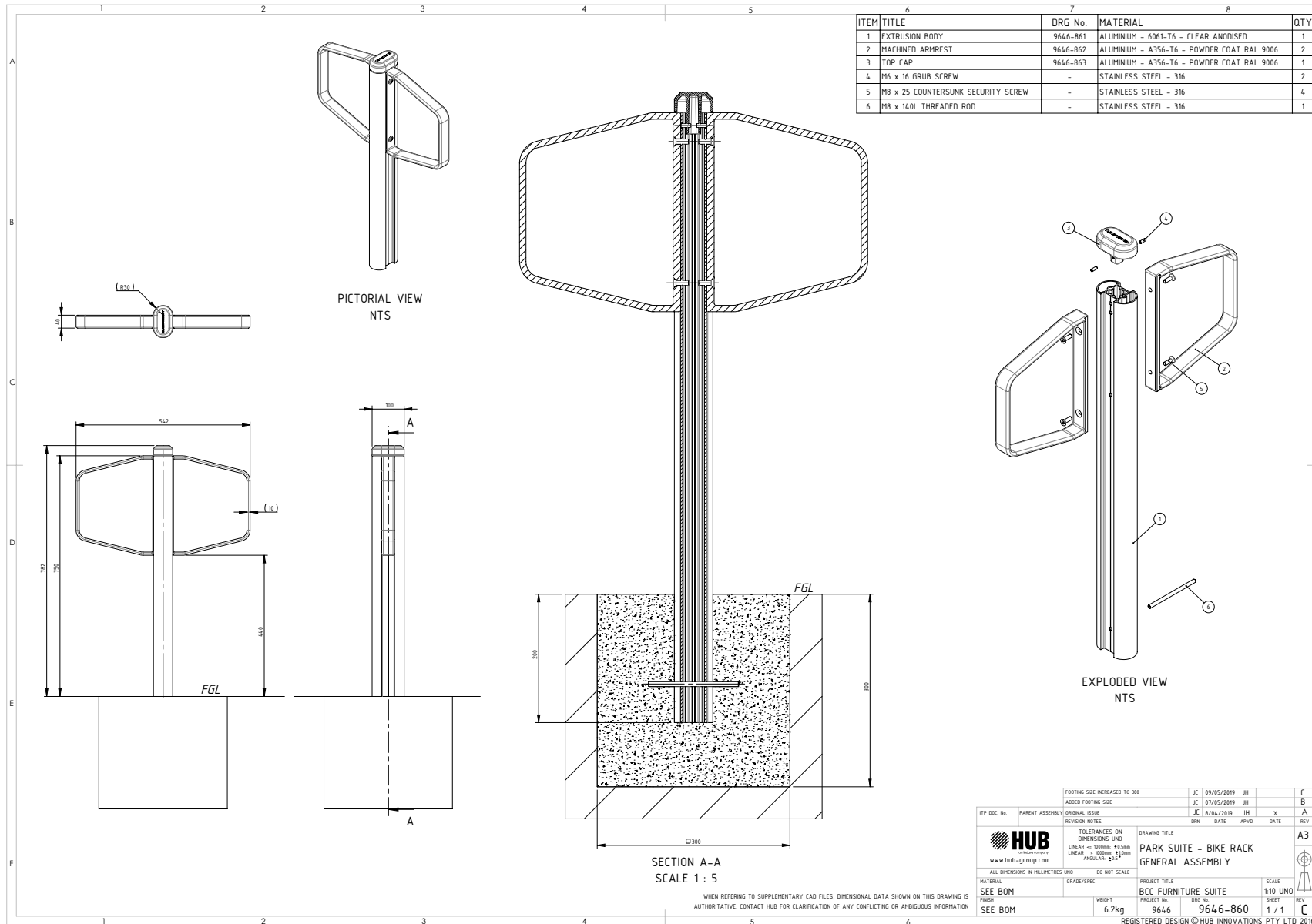
Surface or sub-surface mounted

PARK BIKE RACK SURFACE MOUNTED

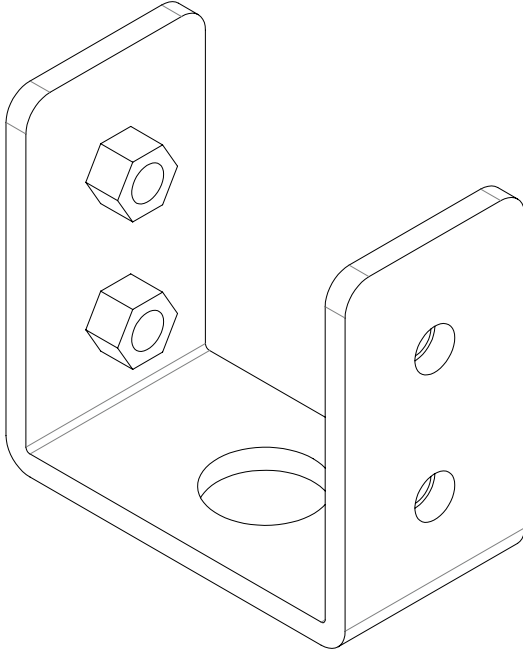


ITP DOC No.	PARENT ASSEMBLY ORIGINAL ISSUE	JC 23/04/2019 JH	DATE	REV
		TOLERANCES ON DIMENSIONS UNO LINEAR $\pm 0.10mm$ $\pm 0.50mm$ LINEAR $\pm 0.05mm$ $\pm 0.20mm$ ANGULAR $\pm 0.5^\circ$		
www.hub-group.com		DRAWING TITLE PARK SUITE - BIKE RACK SURFACE MOUNT GENERAL ASSEMBLY		
ALL DIMENSIONS IN MILLIMETRES UNO DO NOT SCALE		PROJECT TITLE BCC FURNITURE SUITE		
SEE BOM		SCALE 15 UNO		
WEIGHT 6.6kg		PROJECT No. 9646		
DRG No. 9646-870		SHEET 1 / 1		
REGISTERED DESIGN © HUB INNOVATIONS PTY LTD 2016				

PARK BOLLARD SURFACE MOUNTED



SURFACE MOUNT FOOTING OPTIONS



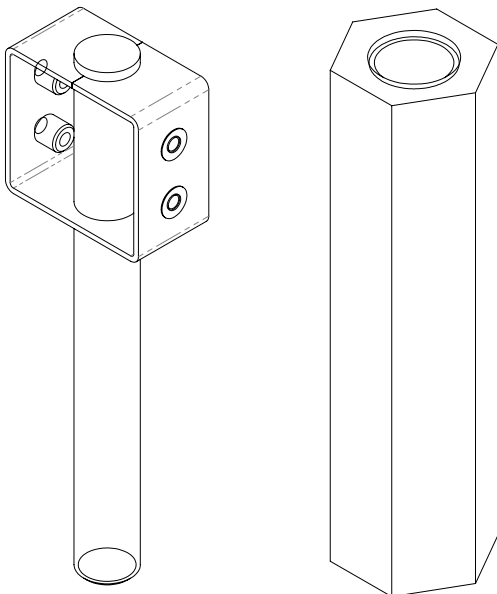
OPTION 1

SURFACE MOUNT FOOT

9646-851

Supplied as standards with orders

Price - \$38 EA



OPTION 2

FABRICATED FOOT + EMBEDDED MOUNT & NUT

9646-813 + 9646-840

To be requested on order placement

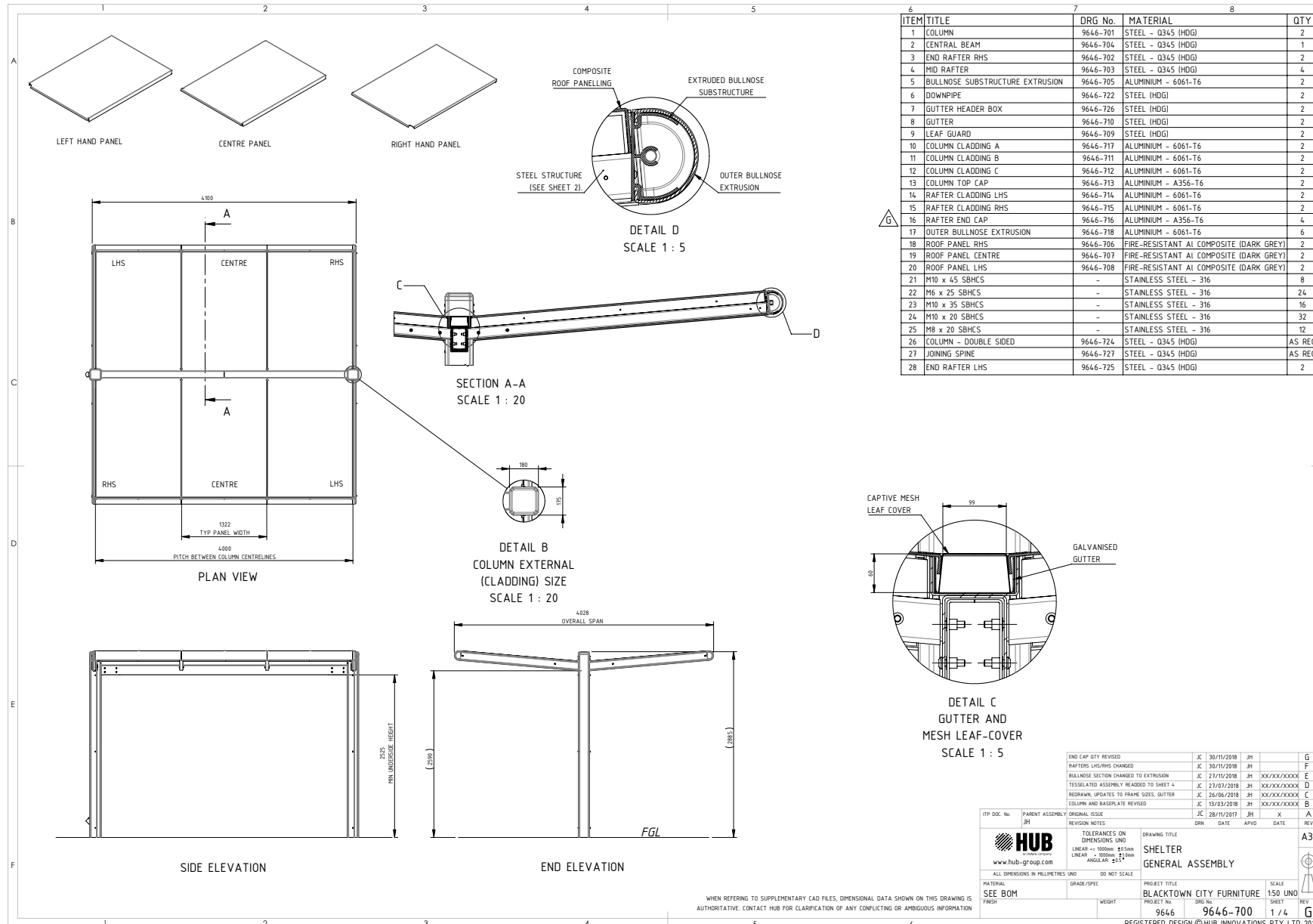
Price - Set of 1 x \$122

P A R K S U I T E

PARK PICNIC SHELTER



PARK PICNIC SHELTER





3 . 0

URBAN SUITE

URBAN SEAT 1800



MATERIALS

Linish Aluminium Sand castings
Select grade Hardwood - oil finish or Modwood slats
Stainless steel fasteners

DIMENSIONS:

L 1800mm W 705mm H 812mm

OPTIONS:

Surface or sub-surface mounted

URBAN SEAT 1800 GENERAL ASSEMBLY

NO.	TITLE	MATERIAL	DRAWING #	QTY
1	Side Frame-Sand Cast-Left	Aluminium A356	9646-050	1
2	Side Frame-Sand Cast-Right	Aluminium A356	9646-053	1
3	Cross Brace-1800	Aluminium 6061 T1	9646-063	1
4	Seat Strap	Stainless Steel Grade 304	9646-060	1
5	Urban Slat-1800-Type A1	Select Grade Hardwood	9646-100	6
6	Urban Slat-1800-Type A2	Select Grade Hardwood	9646-101	1
7	Urban Slat-1800-Type B1	Select Grade Hardwood	9646-102	3
8	Urban Slat-1800-Type B2	Select Grade Hardwood	9646-103	1
9	Washer-Split-M6	Stainless Steel Grade 304	OEM	4
10	Button Head Socket Screw M6 x 20	Stainless Steel Grade 304	OEM	4
11	Wood Screw Button Head Phillips 12g x25	Stainless Steel Grade 304	OEM	55
12	HILTI HAS System-M12x160	OEM	OEM	4

SECTION C-C

DETAIL D SCALE 1 : 5

TOP VIEW

FRONT VIEW

RIGHT SIDE VIEW

BACK VIEW

BOTTOM VIEW

DETAIL E SCALE 1 : 5

SECTION A-A

EXPLODED VIEW

PICTORIAL A

PICTORIAL B

DETAIL B SCALE 1 : 2

3.5MM PILOT HOLES TO BE DRILLED IN TIMBER FOR ALL WOOD SCREWS

7 TYP SLAT SPACING USE SPACER WHEN ASSEMBLING

PARTS LIST

NO.	TITLE	MATERIAL	DRAWING #	QTY
1	Side Frame-Sand Cast-Left	Aluminium A356	9646-050	1
2	Side Frame-Sand Cast-Right	Aluminium A356	9646-053	1
3	Cross Brace-1800	Aluminium 6061 T1	9646-063	1
4	Seat Strap	Stainless Steel Grade 304	9646-060	1
5	Urban Slat-1800-Type A1	Select Grade Hardwood	9646-100	6
6	Urban Slat-1800-Type A2	Select Grade Hardwood	9646-101	1
7	Urban Slat-1800-Type B1	Select Grade Hardwood	9646-102	3
8	Urban Slat-1800-Type B2	Select Grade Hardwood	9646-103	1
9	Washer-Split-M6	Stainless Steel Grade 304	OEM	4
10	Button Head Socket Screw M6 x 20	Stainless Steel Grade 304	OEM	4
11	Wood Screw Button Head Phillips 12g x25	Stainless Steel Grade 304	OEM	55
12	HILTI HAS System-M12x160	OEM	OEM	4

GENERAL NOTES:

- All dimensions in millimetres unless otherwise shown.
- Tolerances:
 - Linear dimension tolerances as specified on drawings.
 - General tolerances are as follows:
 - 0.5mm - 6mm ± 0.1, 6mm - 30mm ± 0.2,
 - 30mm - 120mm ± 0.3, 120mm - 400mm ± 0.5,
 - 400mm - 1000mm ± 0.8, 1000mm - 2000mm ± 1.2
 - Tolerances on all angular dimensions shall be as specified in drawing. General angular tolerances based on length of short side of angle are:
 - >0 - 10mm ± 1°
 - 10mm - 50mm ± 0° 30'
 - 50mm - 120mm ± 0° 20'
 - 120mm - 400mm ± 0° 10'
 - Holes and radii ± 0.5mm unless specified otherwise.
- No deviation from drawing will be accepted without prior written approval.
- Do not scale from drawings. Use dimensions provided if this is insufficient or ambiguous contact HUB for clarification

ASSEMBLY NOTES:

- All fasteners to be included in supply of assembly unless otherwise indicated by HUB.
- All surfaces to be free from marks and scratches.
- Use a Nickel based anti-seizure lubricant between Stainless Slats and Slatted Stainless Steel unless stated.
- Pre-drill Wooden slats prior to screwing to avoid splitting

RHS END FRAME GIVEN SEPARATE DRG-NO.	13/02/2019	-	-	-	-	D
REVISED END FRAMES TO INCLUDE LOGO	JC	3/10/2017	-	-	-	C
Modified Parts		18/07/17	-	-	-	B
Initial Release		12/07/17	-	-	-	A
DESCRIPTION	DRAWN	DATE	CHECKED	DATE	CERTIFIED	DATE
						REVISION

<p>www.hub-group.com</p>	<p>Title: General Assembly</p> <p>Product: Urban Seat 1800 Sand Cast</p> <p>Material: Refer to parts list</p> <p>Finish: Refer to Parts List</p>	<p>Dwg No: 9646-010</p> <p>Project No: 9646</p> <p>Date Drawn: 12/07/17</p> <p>Scale: 1:20</p>
Part Location:	Weight: A3	
Part Name:	- kg	

Registered Design © HUB Innovations Pty Ltd 2017

URBAN SEAT 720



MATERIALS

Linish Aluminium Sand castings
Select grade Hardwood - oil finish or Modwood slats
Stainless steel fasteners

DIMENSIONS:

L 720mm W 705mm H 812mm

OPTIONS:

Surface or sub-surface mounted

URBAN SEAT 720 GENERAL ASSEMBLY

NO.	TITLE	MATERIAL	DRAWING #	QTY
1	Side Frame-Sand Cast-Left	Aluminium A356	9646-050	1
2	Side Frame-Sand Cast-Right	Aluminium A356	9646-053	1
3	Cross Brace-720	Aluminium 6061 T1	9646-064	1
4	Urban Slat-720-Type A1	Select Grade Hardwood	9646-104	6
5	Urban Slat-720-Type A2	Select Grade Hardwood	9646-105	1
6	Urban Slat-720-Type B1	Select Grade Hardwood	9646-106	3
7	Urban Slat-720-Type B2	Select Grade Hardwood	9646-107	1
8	Washer-Split-M6	Stainless Steel Grade 304	OEM	4
9	Button Head Socket Screw M6 x 20	Stainless Steel Grade 304	OEM	4
10	Wood Screw Button Head Phillips 12g x25	Stainless Steel Grade 304	OEM	44
11	HILTI HAS System-M12x160	OEM	OEM	4

SECTION C-C

DETAIL D
SCALE 1 : 5

TOP VIEW

FRONT VIEW

RIGHT SIDE VIEW

BACK VIEW

DETAIL E
SCALE 1 : 5

SECTION A-A

EXPLODED VIEW

PICTORIAL A

PICTORIAL B

BOTTOM VIEW

GENERAL NOTES:

- All dimensions in millimetres unless otherwise shown.
- Tolerances
 - Linear dimension tolerances as specified on drawings.
 - General tolerances are as follows:
 - 0.5mm - 6mm ± 0.1, 6mm - 30mm ± 0.2,
 - 30mm - 120mm ± 0.3, 120mm - 400mm ± 0.5,
 - 400mm - 1000mm ± 0.8, 1000mm - 2000mm ± 1.2
 - Tolerances on all angular dimensions shall be as specified in drawings. General angular tolerances based on length of short side of angle are:
 - > 0 - 10mm ± 1°, 10mm - 50mm ± 0° 30',
 - 50mm - 120mm ± 0° 20', 120mm - 400mm ± 0° 10',
 - Holes and radii ± 0.5mm unless specified otherwise.
- No deviation from drawing will be accepted without prior written approval.
- Do not scale from drawings. Use dimensions provided if this is insufficient or ambiguous contact HUB for clarification

ASSEMBLY NOTES:

- All fasteners to be included in supply of assembly unless otherwise indicated by HUB.
- All surfaces to be free from marks and scratches.
- Use a Nickel based anti-seizure lubricant between Stainless Slats and Slatted Stainless Steel unless stated.
- Pre-drill Wooden slats prior to screwing to avoid splitting

3.5MM PILOT HOLES TO BE DRILLED IN TIMBER FOR ALL WOOD SCREWS

7MM TIP SLAT SPACING
USE SPACER WHEN ASSEMBLING

DETAIL F SCALE 1 : 2

DESCRIPTION	DRAWN	DATE	CHECKED	DATE	CERTIFIED	DATE	REVISION
RHS GIVEN SEPARATE PART No.	JC	13/02/2019	-	-	-	-	D
REVISED END FRAME TO INCLUDE LOGGO	JC	3/10/2017	-	-	-	-	C
Modified parts	-	18/07/17	-	-	-	-	B
Initial Release	-	12/07/17	-	-	-	-	A

 www.hub-group.com	Title: General Assembly		Dwg No: 9646-009
	Product: Urban Seat 720 Sand Cast		Project No: 9646
	Material: Refer to parts list		Date Drawn: 12/07/17
	Finish: Refer to Parts List		Scale: 1:20
Part Location:	Weight: - kg		
Part Name:	Registered Design © HUB Innovations Pty Ltd 2017		

URBAN BENCH



MATERIALS

Linish Aluminium Sand castings
Select grade Hardwood - oil finish or Modwood slats
Stainless steel fasteners

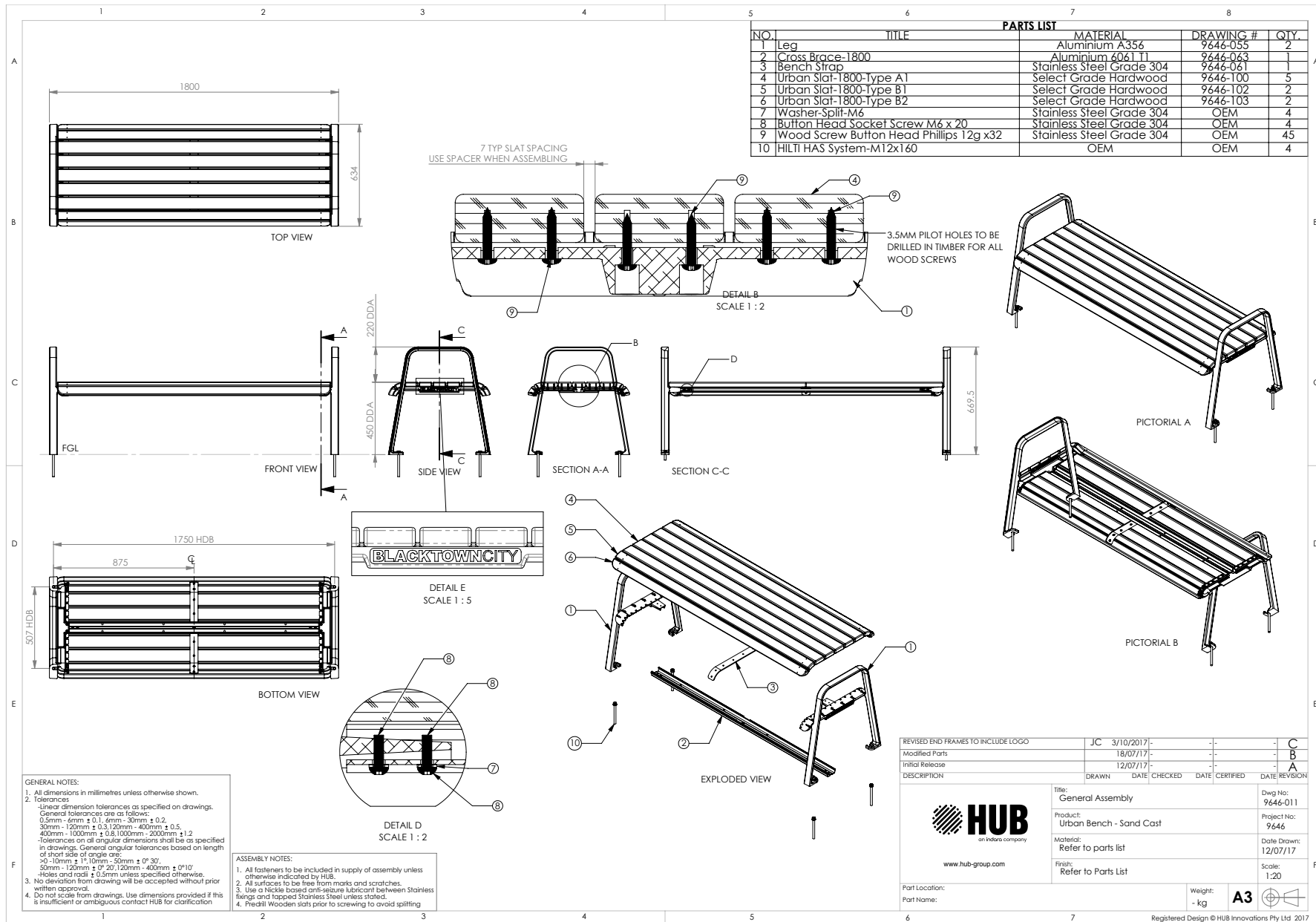
DIMENSIONS:

L 720mm W 705mm H 812mm

OPTIONS:

Surface or sub-surface mounted

URBAN BENCH GENERAL ASSEMBLY



URBAN BOLLARD



Picture showing sub-surface mounted

MATERIALS

Linish Aluminium Sand castings
Stainless steel fasteners
Reflective Strip

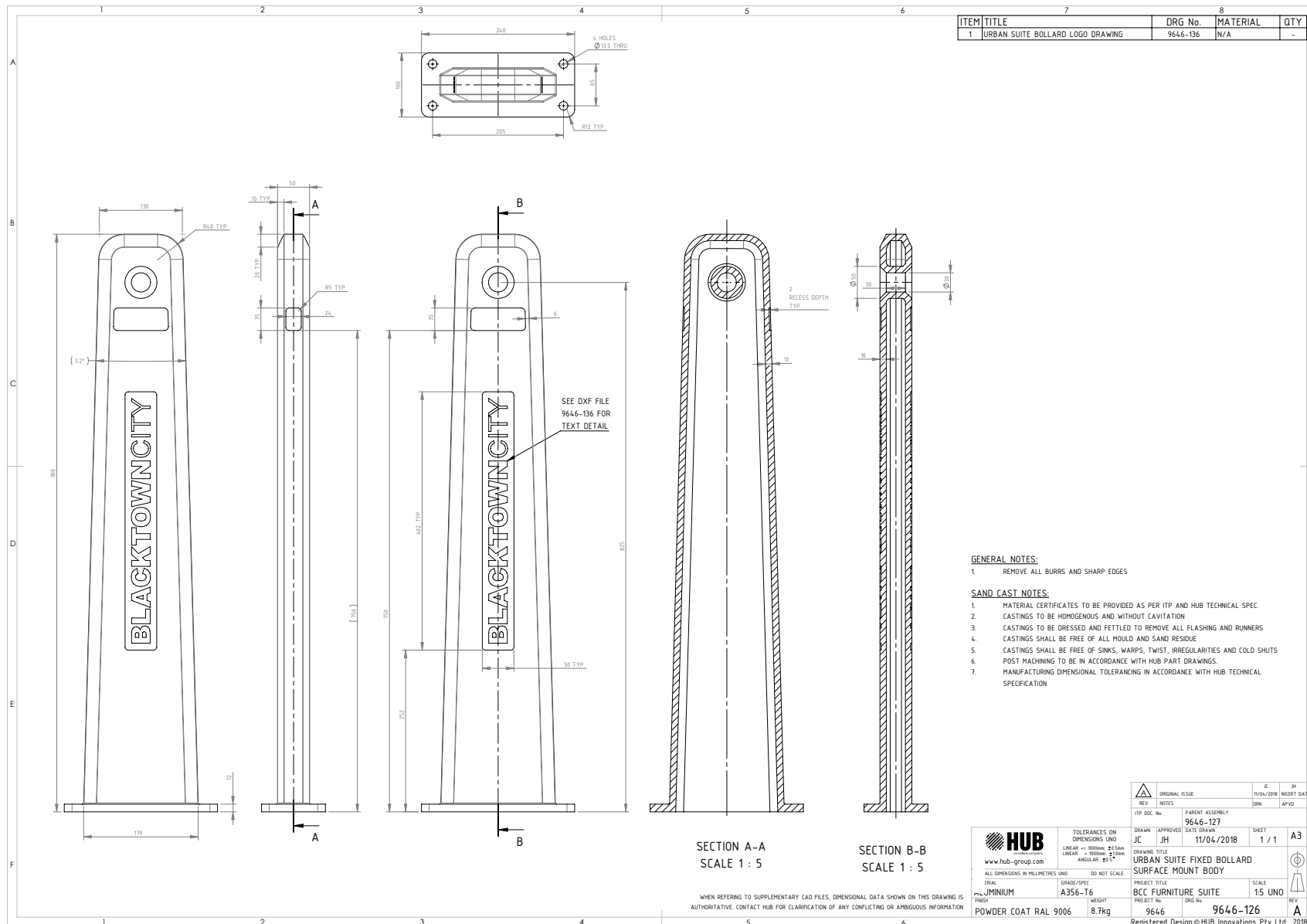
DIMENSIONS:

L 1050mm W 240mm H 812mm

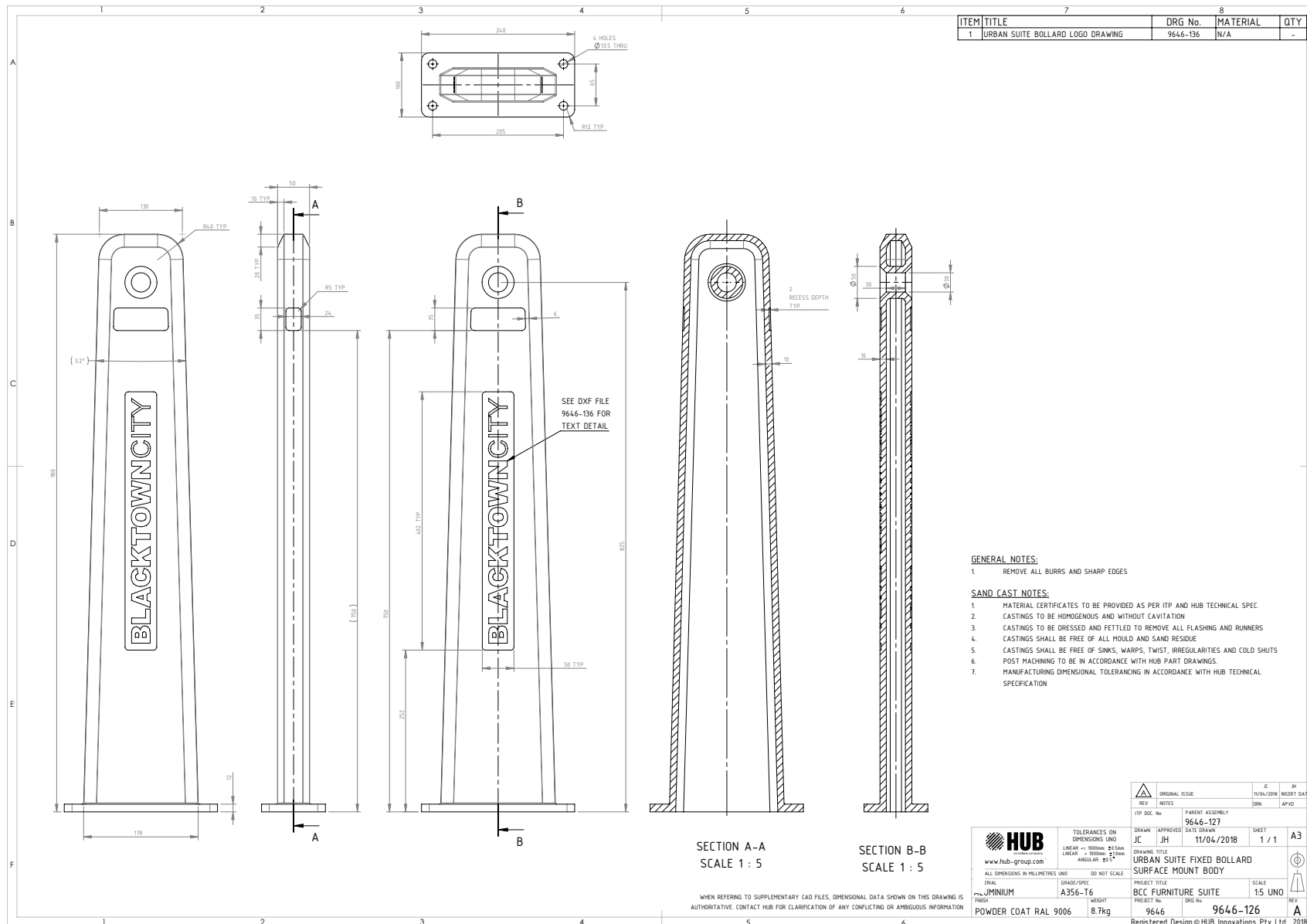
OPTIONS:

Surface or sub-surface mounted or removeable

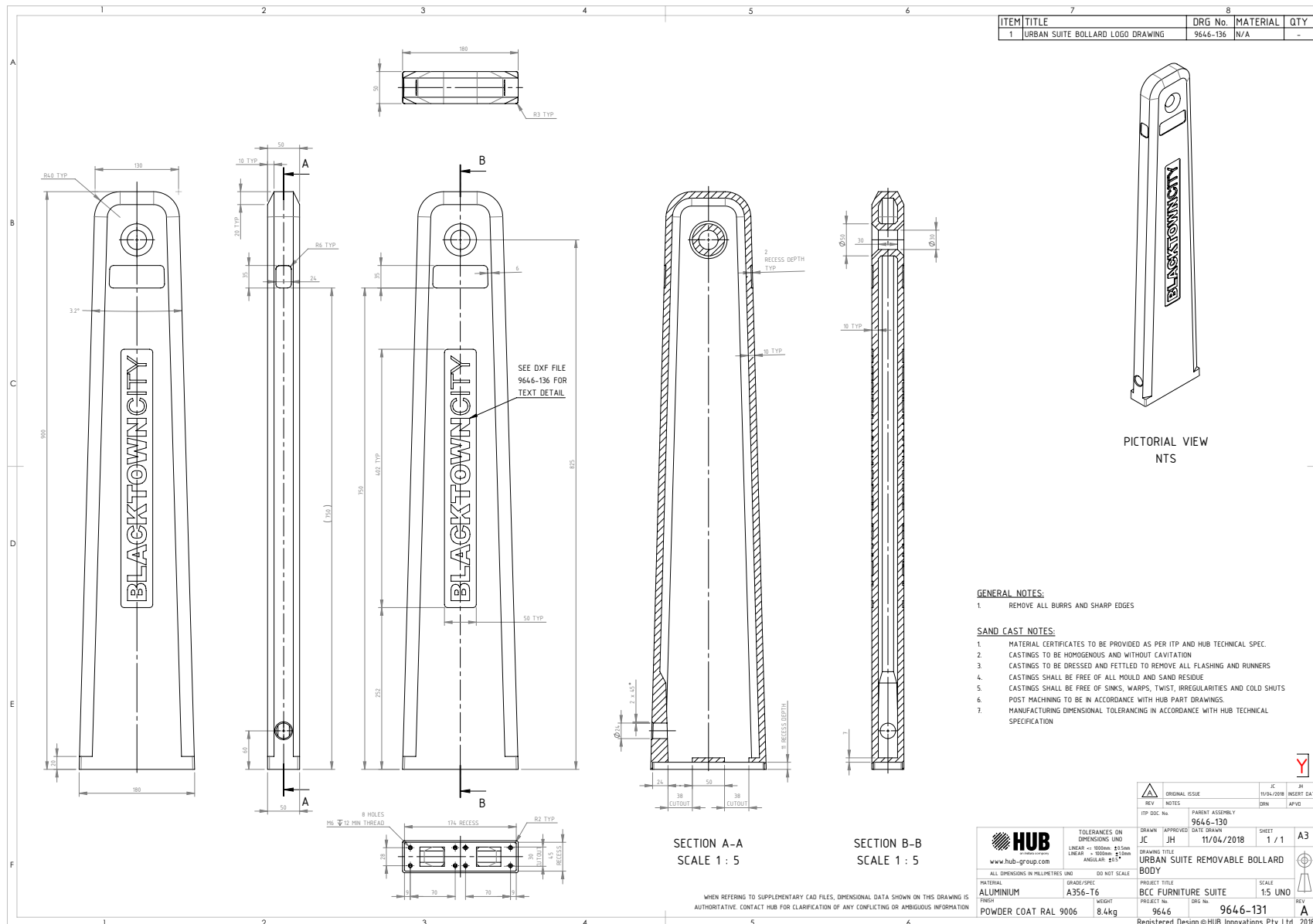
URBAN BOLLARD FIXED SURFACE MOUNTED GENERAL ASSEMBLY



URBAN BOLLARD FIXED SUB-SURFACE MOUNTED GENERAL ASSEMBLY



URBAN BOLLARD REMOVEABLE MOUNTED GENERAL ASSEMBLY



URBAN BIKE RACK



Picture showing sub-surface mounted

MATERIALS

Linish Aluminium Sand castings
Stainless steel fasteners
Reflective Strip

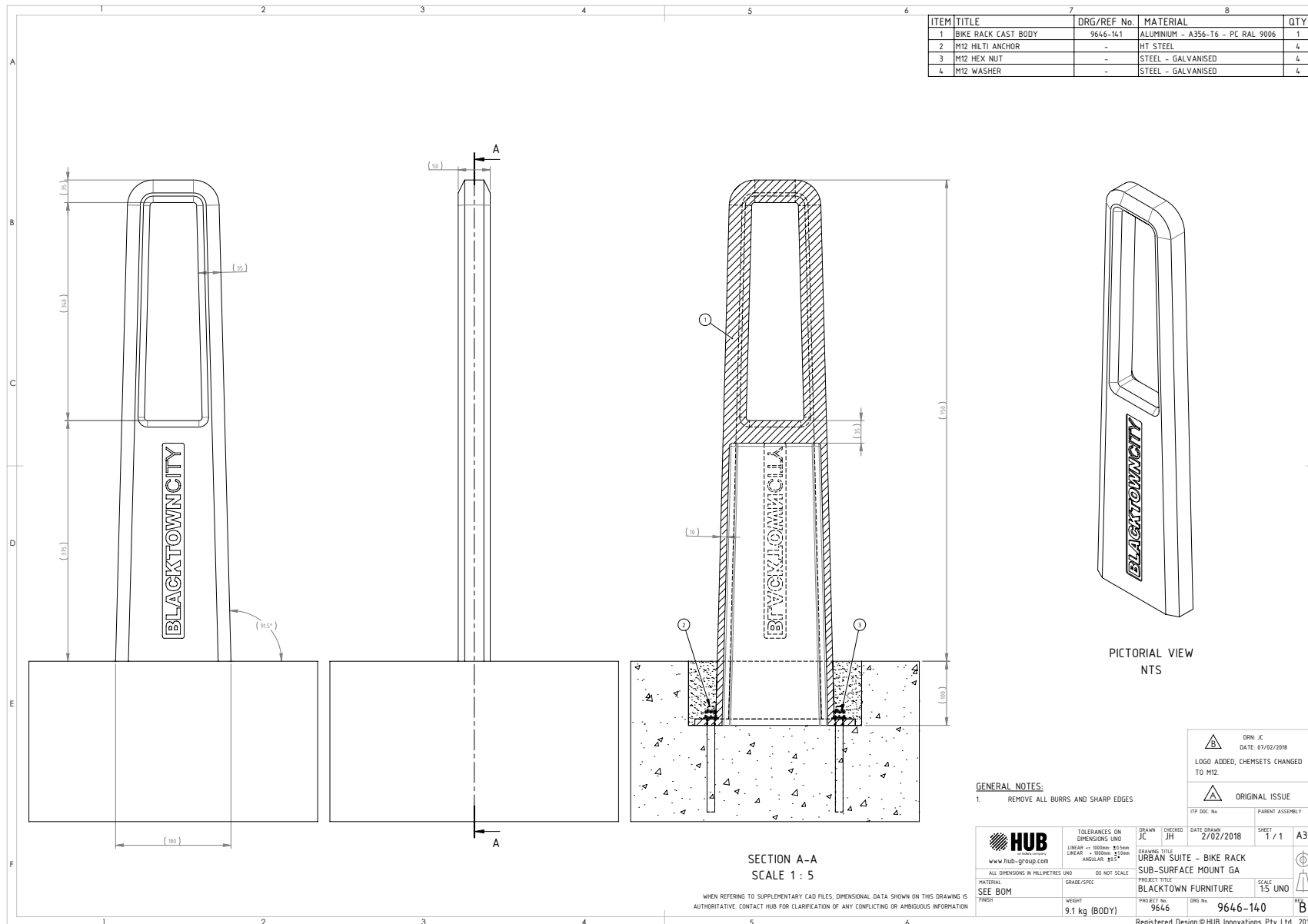
DIMENSIONS:

L 150mm W 250mm H 750mm

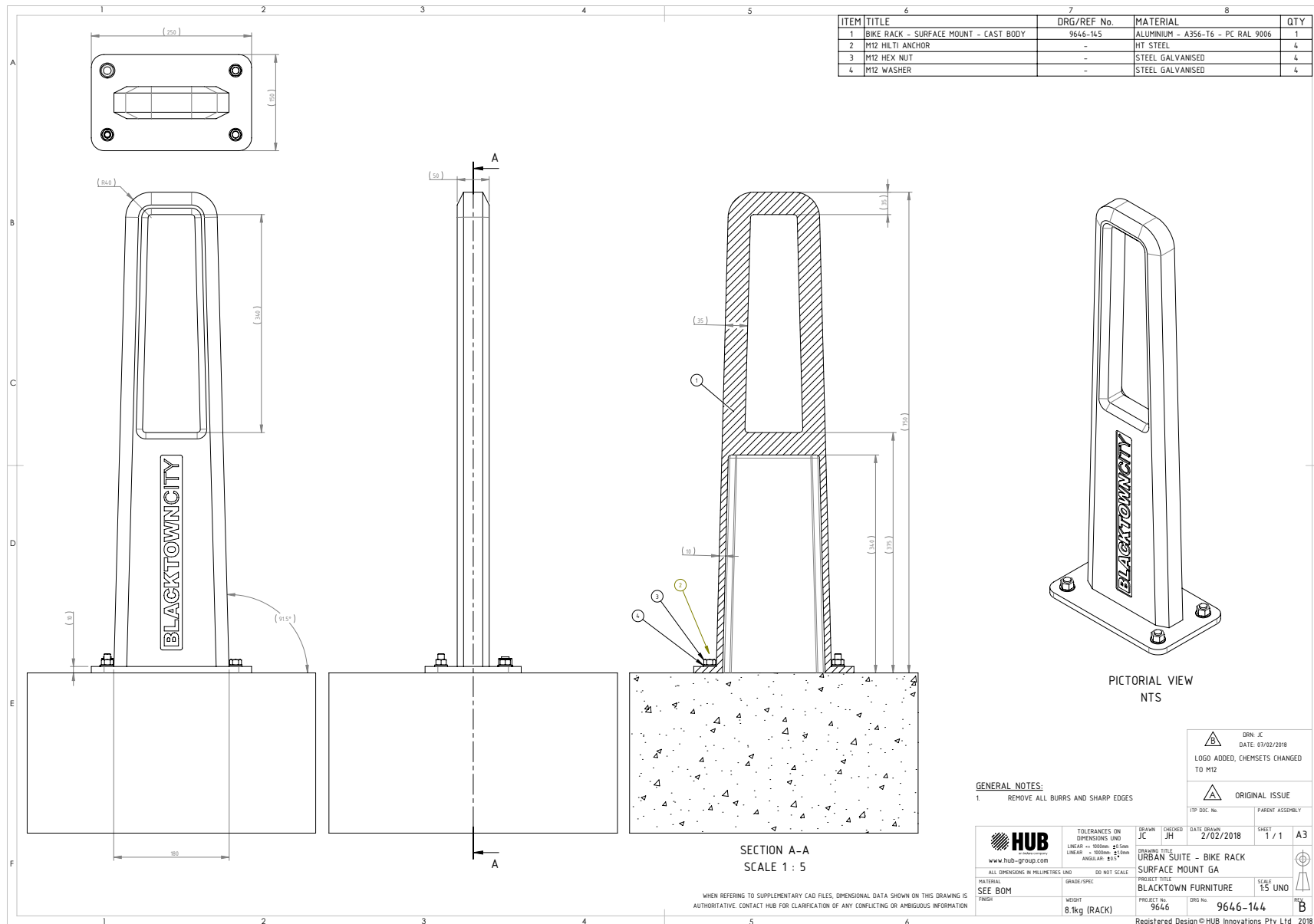
OPTIONS:

Surface or sub-surface mounted or removeable

URBAN BIKE RACK SUB SURFACE MOUNTED GENERAL ASSEMBLY



URBAN BIKE RACK SUB SURFACE MOUNTED GENERAL ASSEMBLY





4 . 0
140LT & 240LT BIN

B I N

140LT & 240LT BIN



MATERIALS

Chute - Linish Sand Cast aluminium
Roof - Sand Cast aluminium
Body - Mild Steel HDG and powdercoated

CAPACITY: 140LT & 240LT Solo Bin

DIMENSIONS:

140LT - L 800mm W 800mm H 1346mm
240LT - L 800mm W 800mm H 1438mm

STANDARD COLOUR: Silver RAL 9006 anti-graffiti

BIN 140LT GENERAL ASSEMBLY

TOP VIEW

SECTION C-C
SCALE 1 : 5

ITEM	TITLE	REF/DRG No	MATERIAL	QTY
1	URBAN BIN COVER - 140L SULO	9646-332	ALUMINIUM - A356-T6	1
2	URBAN BIN CHUTE (WITH ASHTRAY) - 140L SULO (SEE NOTE 1)	9646-331	ALUMINIUM - A356-T6	1
3	TOP CONNECTION BRACKET	0005-351	MILD STEEL (POWDERCOATED)	4
4	EXTRUSION - 140L SULO	9646-311	ALUMINIUM - 6061-T6	3
5	EXTRUSION LOCK SIDE 140L SULO	9646-313	ALUMINIUM - 6061-T6	1
6	URBAN SUITE - BIN ASHTRAY MKII RECEPTACLE	9646-349	STAINLESS STEEL - 316	1
7	URBAN SUITE - BIN ASHTRAY MKII HOLSTER	9646-350	STAINLESS STEEL - 316	1
8	BIN CLADDING 140L SULO	9646-302	MILD STEEL (POWDERCOATED)	3
9	BIN DOOR 140L SULO	9646-304	MILD STEEL (POWDERCOATED)	1
10	BIN BOTTOM BRACE 140L SULO	9646-318	MILD STEEL (POWDERCOATED)	3
11	BIN BOTTOM CONNECTION BRACKET	9646-317	MILD STEEL (POWDERCOATED)	2
12	BIN BOTTOM CONNECTION BRACKET DOOR RHS	9646-316	MILD STEEL (POWDERCOATED)	1
13	BIN BOTTOM CONNECTION BRACKET DOOR LHS	9646-315	MILD STEEL (POWDERCOATED)	1
14	PIANO HINGE	9646-321	STAINLESS STEEL (GRADE TBC)	1
15	10mm RIVET	-	STAINLESS STEEL - 316	16
16	M8 NYLOCK NUT	-	STAINLESS STEEL - 316	6
17	M8 WASHER	-	STAINLESS STEEL - 316	15
18	M8 SPRING WASHER	-	STAINLESS STEEL - 316	15
19	M8 x 25 SHCS	-	STAINLESS STEEL - 316	10
20	M5 NYLOCK NUT	-	STAINLESS STEEL - 316	32
21	M5 x 12 SBHCS	-	STAINLESS STEEL - 316	32
22	M8 x 45 SHCS	-	STAINLESS STEEL - 316	6
23	5mm RIVET	-	STAINLESS STEEL - 316	8
24	M12 NUT (HLTI HAS SYSTEM)	-	STEEL (STRUCTURAL FASTENER 8.8/S)	8
25	M12 x 125 THREADED ROD (HLTI HAS SYSTEM)	-	STEEL (STRUCTURAL FASTENER 8.8/S)	4
26	M12 WASHER (HLTI HAS SYSTEM)	-	STEEL (STRUCTURAL FASTENER 8.8/S)	8
27	LOCK: QTR TURN WITH SPRING CAM (ESSENTRA #468499 OR EDV)	-	CHROME PLATED STEEL	1
28	140L SULO BIN	-	(SHOWN FOR REFERENCE ONLY)	(1)
29	URBAN BIN CHUTE (NO ASHTRAY) 140L SULO (SEE NOTE 2)	9646-343	ALUMINIUM - A356-T6	1

FRONT VIEW

SIDE VIEW
(OPPOSITE DOOR)

EXPLODED VIEW
NTS

DETAIL A
SCALE 1 : 5

DETAIL B
SCALE 1 : 10

ALTERNATIVE CHUTE (NO ASHTRAY) NTS

GENERAL NOTES:

- THESE COMPONENTS ARE NOT REQUIRED ON BINS WITHOUT ASHTRAY
- ALTERNATIVE CHUTE DESIGN TO BE USED WHEN NO ASHTRAY REQUIRED.

WHEN REFERRING TO SUPPLEMENTARY CAD FILES, DIMENSIONAL DATA SHOWN ON THIS DRAWING IS AUTHORITY. CONTACT HUB FOR CLARIFICATION OF ANY CONFLICTING OR AMBIGUOUS INFORMATION

HUB		TOLERANCES ON DIMENSIONS UNLESS SPECIFIED	DRAWN: JC	CHECKED: JH	DATE DRAWN: 4/10/2017	SHEET: 1 / 1	A3
www.hub-group.com		LINEAR: ±0.20mm ±0.50mm					
MATERIAL: ALUMINIUM		ANGULAR: ±1°					
SEE BOM		GRADE/TYPE					
PROJECT TITLE: URBAN SUITE		SCALE: 1:10					
PROJECT NO: 9646		DRG NO: 9646-340					
PROJECT TITLE: BLACKTOWN CITY FURNITURE		Registered Design © HUB Innovations Pty Ltd 2017					

DRN: JC DATE: 06/12/2018
ASHTRAY DESIGN REVISED

DRN: JC DATE: 20/11/2017
ITEM 27 REVISED.

DRN: JC DATE: 14/11/2017
NO-ASHTRAY CHUTE ALTERNATIVE ADDED (ITEM 29).

ORIGINAL ISSUE

BIN 240LT GENERAL ASSEMBLY

TOP VIEW

SECTION C-C
SCALE 1 : 5

ITEM	TITLE	REF/DRG No	MATERIAL	QTY
1	URBAN BIN COVER - 140L SULO	9646-332	ALUMINIUM - A356-T6	1
2	URBAN BIN CHUTE (WITH ASHTRAY) - 140L SULO (SEE NOTE 1)	9646-331	ALUMINIUM - A356-T6	1
3	TOP CONNECTION BRACKET	0005-351	MILD STEEL (POWDERCOATED)	4
4	EXTRUSION - 140L SULO	9646-311	ALUMINIUM - 6061-T6	3
5	EXTRUSION LOCK SIDE 140L SULO	9646-313	ALUMINIUM - 6061-T6	1
6	URBAN SUITE - BIN ASHTRAY MKII RECEPTACLE	9646-349	STAINLESS STEEL - 316	1
7	URBAN SUITE - BIN ASHTRAY MKII HOLSTER	9646-350	STAINLESS STEEL - 316	1
8	BIN CLADDING 140L SULO	9646-302	MILD STEEL (POWDERCOATED)	3
9	BIN DOOR 140L SULO	9646-304	MILD STEEL (POWDERCOATED)	1
10	BIN BOTTOM BRACE 140L SULO	9646-318	MILD STEEL (POWDERCOATED)	3
11	BIN BOTTOM CONNECTION BRACKET	9646-317	MILD STEEL (POWDERCOATED)	2
12	BIN BOTTOM CONNECTION BRACKET DOOR RHS	9646-316	MILD STEEL (POWDERCOATED)	1
13	BIN BOTTOM CONNECTION BRACKET DOOR LHS	9646-315	MILD STEEL (POWDERCOATED)	1
14	PIANO HINGE	9646-321	STAINLESS STEEL (GRADE TBC)	1
15	10mm RIVET	-	STAINLESS STEEL - 316	16
16	M8 NYLOCK NUT	-	STAINLESS STEEL - 316	6
17	M8 WASHER	-	STAINLESS STEEL - 316	15
18	M8 SPRING WASHER	-	STAINLESS STEEL - 316	15
19	M8 x 25 SHCS	-	STAINLESS STEEL - 316	10
20	M5 NYLOCK NUT	-	STAINLESS STEEL - 316	32
21	M5 x 12 SBHCS	-	STAINLESS STEEL - 316	32
22	M8 x 45 SHCS	-	STAINLESS STEEL - 316	6
23	5mm RIVET	-	STAINLESS STEEL - 316	8
24	M12 NUT (HILTI HAS SYSTEM)	-	STEEL (STRUCTURAL FASTENER 8.8/S)	8
25	M12 x 125 THREADED ROD (HILTI HAS SYSTEM)	-	STEEL (STRUCTURAL FASTENER 8.8/S)	4
26	M12 WASHER (HILTI HAS SYSTEM)	-	STEEL (STRUCTURAL FASTENER 8.8/S)	8
27	LOCK: QTR TURN WITH SPRING CAM (ESSENTRA #468499 OR EDV)	-	CHROME PLATED STEEL	1
28	140L SULO BIN	-	(SHOWN FOR REFERENCE ONLY)	(1)
29	URBAN BIN CHUTE (NO ASHTRAY) 140L SULO (SEE NOTE 2)	9646-343	ALUMINIUM - A356-T6	1

FRONT VIEW

SIDE VIEW
(OPPOSITE DOOR)

EXPLODED VIEW
NTS

DETAIL A
SCALE 1 : 5

DETAIL B
SCALE 1 : 10

ALTERNATIVE CHUTE (NO ASHTRAY) NTS

GENERAL NOTES:

- THESE COMPONENTS ARE NOT REQUIRED ON BINS WITHOUT ASHTRAY
- ALTERNATIVE CHUTE DESIGN TO BE USED WHEN NO ASHTRAY REQUIRED.

WHEN REFERRING TO SUPPLEMENTARY CAD FILES, DIMENSIONAL DATA SHOWN ON THIS DRAWING IS AUTHORITATIVE. CONTACT HUB FOR CLARIFICATION OF ANY CONFLICTING OR AMBIGUOUS INFORMATION

<p>www.hub-group.com</p>	<p>TOLERANCES ON DIMENSIONS UNLESS SPECIFIED</p> <p>LINEAR = 0.000mm ±0.05mm</p> <p>ANGULAR = ±1°</p>	<p>DRAWN: JC</p> <p>CHECKED: JH</p> <p>DATE DRAWN: 4/10/2017</p>	<p>SHEET: 1 / 1</p> <p>SCALE: 1:10</p>
<p>SEE BOM</p>	<p>PROJECT TITLE: URBAN SUITE</p> <p>PROJECT TITLE: BIN - 140L SULO</p> <p>PROJECT TITLE: BLACKTOWN CITY FURNITURE</p> <p>PRODUCT No: 9646</p>	<p>DATE DRAWN: 4/10/2017</p> <p>PROJECT TITLE: URBAN SUITE</p> <p>PROJECT TITLE: BIN - 140L SULO</p> <p>PROJECT TITLE: BLACKTOWN CITY FURNITURE</p> <p>PRODUCT No: 9646</p>	<p>SCALE: 1:10</p> <p>DATE: 4/10/2017</p> <p>PROJECT TITLE: URBAN SUITE</p> <p>PROJECT TITLE: BIN - 140L SULO</p> <p>PROJECT TITLE: BLACKTOWN CITY FURNITURE</p> <p>PRODUCT No: 9646</p>

Registered Design © HUB Innovations Pty Ltd 2017

DRN: JC
DATE: 06/12/2018
ASHTRAY DESIGN REVISED

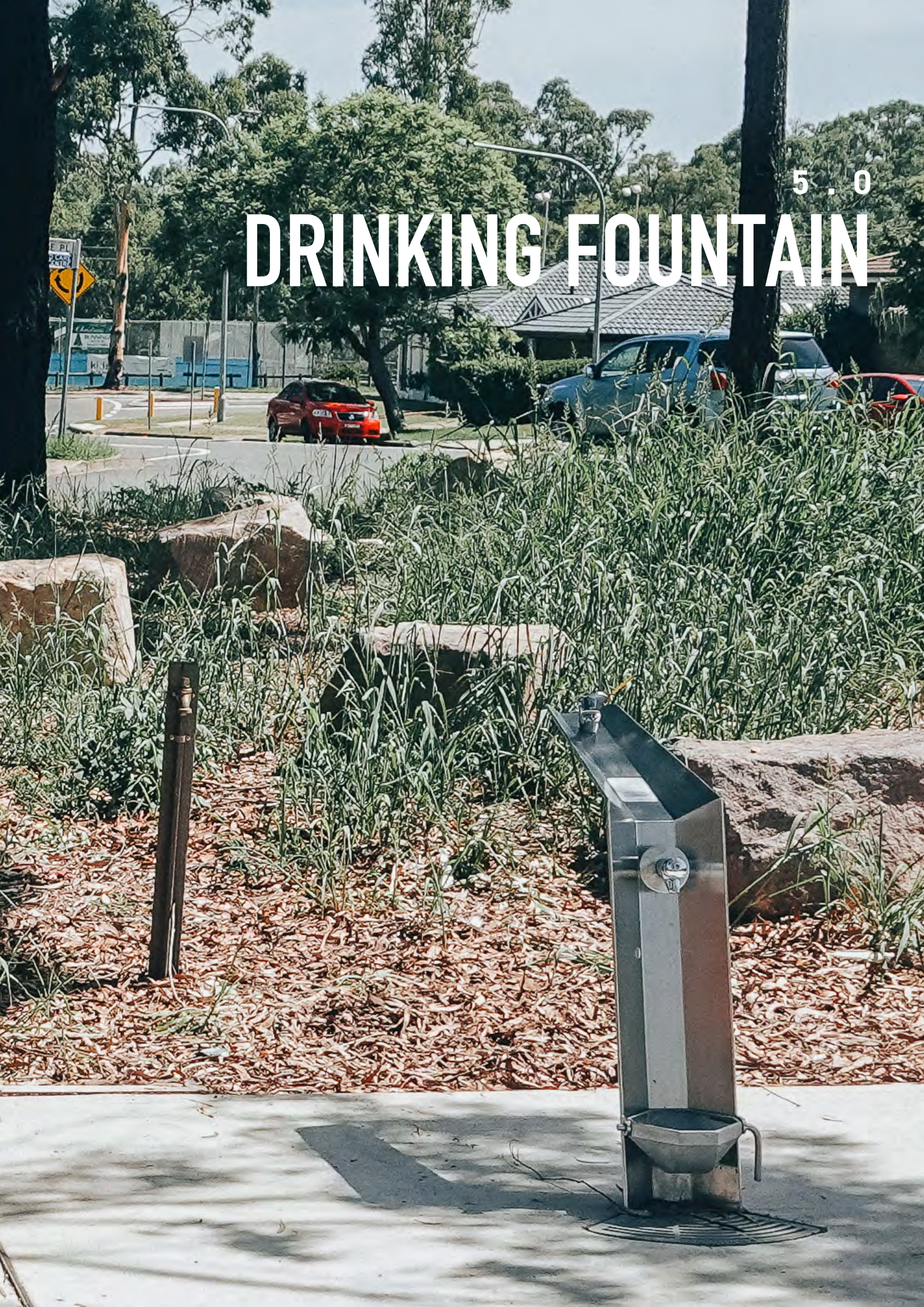
DRN: JC
DATE: 20/11/2017
ITEM 27 REVISED.

DRN: JC
DATE: 14/11/2017
NO-ASHTRAY CHUTE ALTERNATIVE ADDED (ITEM 29).

ORIGINAL ISSUE

5 . 0

DRINKING FOUNTAIN



DRINKING FOUNTAIN



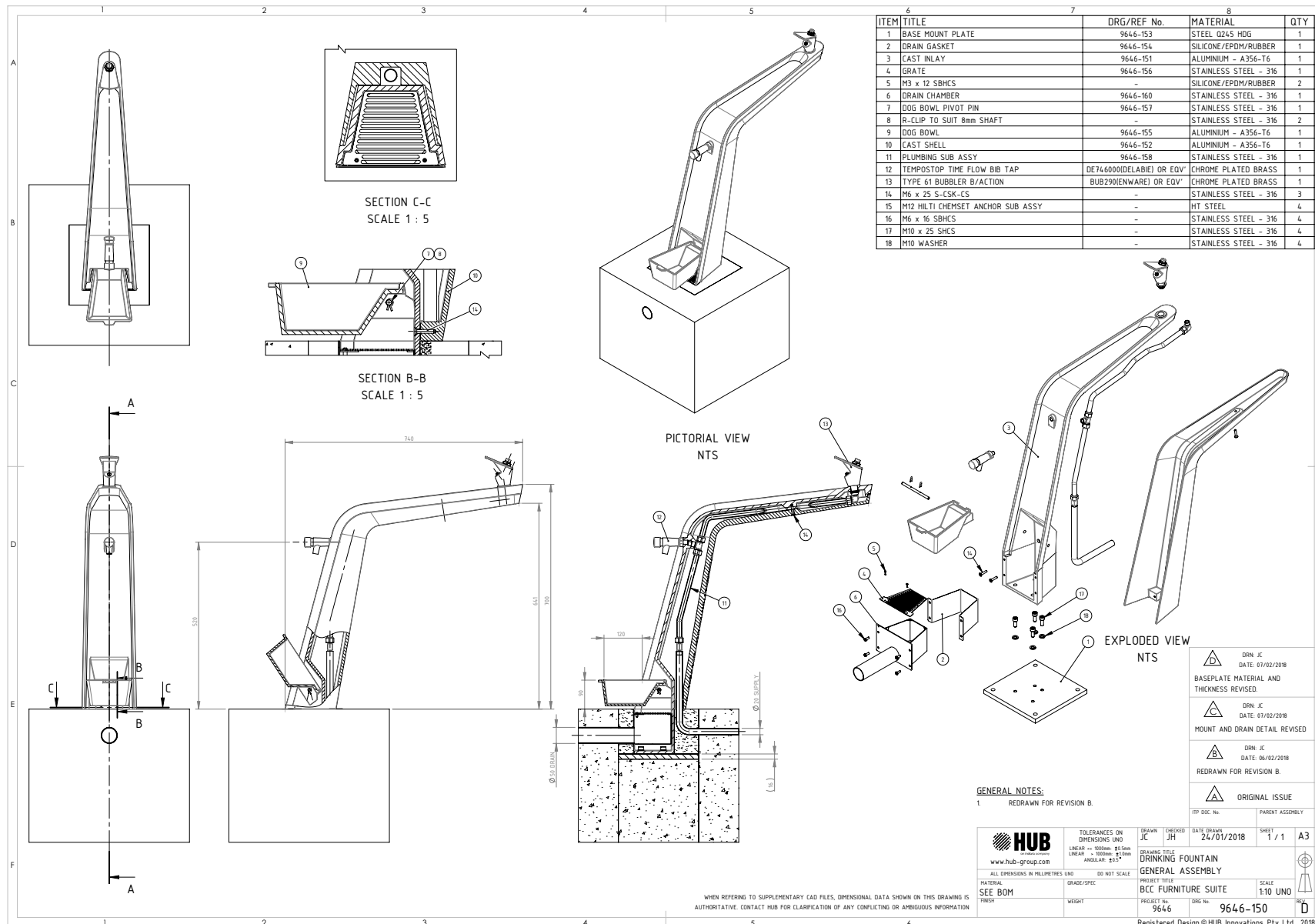
MATERIALS

Linish Aluminium Sand Cast finish
Bubbler and tap Stainless Steel

DIMENSIONS:

L 76mm H 760mm

URBAN DRINKING FOUNTAIN GENERAL ASSEMBLY





DESIGN INNOVATE ENABLE

HUB is a wholly owned subsidiary of Indara, Australia's leading owner and operator of digital infrastructure and majority owned by AustralianSuper.

HUB Australasia reserves the right to change any specification without prior notification.

Copyright © 2024 HUB Australasia Pty Ltd
All rights reserved.

HUB AUSTRALASIA PTY LTD

259 Milperra Rd, Revesby NSW 2212

T +61 2 9495 1293
F +61 2 9212 6899

info@hub-group.com
www.hub-group.com



V3 - 09/09/24